

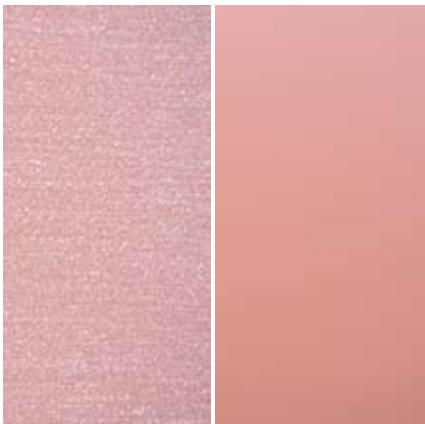
Bowl feeder coatings

Habasit

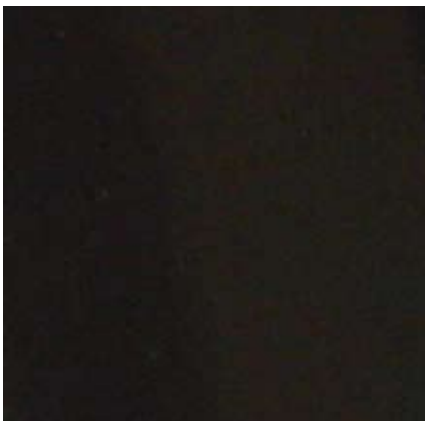


Type	Habasit
Color	Green
Application for	<ul style="list-style-type: none"> Slightly oily parts Plastic parts with separation agent
Not to be used for	–
Properties	<ul style="list-style-type: none"> Increased running speed Part protection
Oil resistant	Yes

Polyurethane (PU)



Type	PU glued Rough version, left Smooth version, right
Color	Red/Brown
Application for	<ul style="list-style-type: none"> Heavy steel parts High loads
Not to be used for	Oily parts (only for smooth version)
Properties	<ul style="list-style-type: none"> Part protection Low wear
Oil resistant	Yes



Type	PU sprayed
Color	Black
Application for	<ul style="list-style-type: none"> Dry parts Steel parts Plastic parts
Not to be used for	Oily parts
Properties	Part protection
Oil resistant	Yes

Brush coating



Typ	Brush coating
Color	Green
Application for	Oily parts (steel and plastic)
Not to be used for	<ul style="list-style-type: none"> • Parts with anchoring effect • Round parts
Properties	<ul style="list-style-type: none"> • Increased running speed • Part protection
Oil resistant	Yes

Traction fabric



Type	Traction fabric
Color	White
Application for	<ul style="list-style-type: none"> • Dry plastic parts • Rubber parts
Not to be used for	Oily parts
Properties	<ul style="list-style-type: none"> • Increased running speed • Part protection
Oil resistant	No